



THE YALE CLUB
OF NEW HAVEN

2007
SCHOLARSHIP
AWARDS



“With ample generosity and support, the Yale Club of New Haven augments the Yale experience in significant and enduring ways, and it is to its benefaction that I remain indebted. Beyond the groups that furthered the excellence of my undergraduate days, the Yale Club, in great measure, remains unsurpassed amongst my fondest reflections, for it constituted the interchange between financing my undergraduate education and the committed intention I hold of sustaining my relationship with Yale long after graduation.”

— Tahia Thaddeus Reynaga, Ph.D.
Old Campus Fellow, Yale University
Yale College Class of 1998



NAMED SCHOLARSHIPS

HENRY P. & JANICE BRIGHTWELL SCHOLARSHIP: Established in 1992 by Mr. Brightwell '35, a long-standing member of the Yale Club Board of Directors, and his wife.

CARMEN L. COZZA SCHOLARSHIP: Established in 1989 in celebration of Mr. Cozza's twenty-five years of coaching football at Yale.

JAMES S. DAVIE SCHOLARSHIP: Established in 1985 in memory of Professor Davie '45W, '51 Ph.D., a long-time Dean of Timothy Dwight College and former President of the Yale Club.

FLORENCE & SHERWOOD EBERTH SCHOLARSHIP: Established in 1991 by Mr. Eberth '20S, a former President of the Yale Club, and his wife.

M. ALBERT GEIB SCHOLARSHIP: Established in 1989 in memory of the Professor of Engineering, to assist students entering the sciences.

A. BARTLETT GIAMATTI SCHOLARSHIP: Established in 1979 in his honor when Professor Giamatti '60, '64 Ph.D. became President of Yale, and greatly enhanced by contributions since his death.

WILLIS HUNT SCHOLARSHIP: The first Yale Club Named Scholarship, established in 1976 by a bequest of Dr. Hunt, a long-time supporter of the Club.

ROBERT E. & RUTH R. LAPIDES SCHOLARSHIP: Established in 1994 by Mr. Lapides '39 and his wife, on the occasion of his 55th Yale reunion.

SIDNEY LOVETT SCHOLARSHIP: Established in 1979 in memory of the Rev. Lovett '13, much-loved chaplain of the University.

ROBERT & JOYCE MAILHOUSE SCHOLARSHIP: Established in 1999 to assist local students, particularly those from Branford, entering Yale.

EDWARD M. NOYES II SCHOLARSHIP: Established in 1999 in memory of Mr. Noyes '40, a former Yale Club President and long-time head of Career Services at Yale.

PHILIP M. & MATTHEW A. ORAVETZ SCHOLARSHIP: Established in 2003 to assist local students, particularly those who have the attributes of a scholar-athlete.

WINTHROP A. SMITH SCHOLARSHIP: Established in 2001 by the Smith family in memory of their father Winthrop A. Smith '31, a long-time supporter of the Club.

WHITE BROTHERS SCHOLARSHIP: Established in 1993 by Mr. White '42S in memory of his brother James '40. Both men were Yale Club of New Haven Scholars.

*The Yale Club of New Haven will contribute
over \$250,000 to 67 exceptional undergraduate
and graduate students from the greater New Haven area
during the coming academic year.*



2011



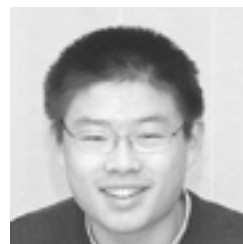
SHANICA BAYNES
Hillhouse High School
White Brothers Scholar
Shafer Scholar
Literary Magazine, Editor
School Newspaper, Reporter
Emma Ruff Short Story Contest Winner
Math Team; Book Bowl Captain
Public Ministry as a Jehovah's Witness



MARIAM HINDS
Hopkins School
Carmen L. Cozza Scholar
Student Council, Political Forum
Diversity and Disciplinary Committees
Princeton Model Congress
National Young Leaders Conference
Jack and Jill of America, Sec. and V.P.
Varsity Track



ELIZABETH EDDY
Williams School, New London
Edward M. Noyes II Scholar
Dancer with Eastern Connecticut Ballet
Chemistry Olympiad
Middlesex Hospital Volunteer



DAI YANG LENG
Branford High School
Robert & Joyce Mailhouse Scholar
Violinist
Math & Science Competitions
Poetry Recitation
Interested in Physics
Curagen Intern



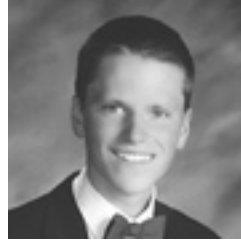
NANCY LU
Cheshire High School
Wellesley Book Award
Model United Nations
National Latin Exam Gold Medal
Peer Tutor



ALEXANDRA THOMPSON
Guilford High School
Philip M. & Matthew A. Oravetz Scholar
Cornell Book Award
Crew Team, Co-Founder
All-SCC Indoor Track; Cross Country
Scholastic Art Awards Gold Portfolio Award
Heifer Project; Community Service
Career Goal: Architect



MICHAEL SAMSEL
East Haven High School
Henry & Janice Brightwell Scholar
Yale Book Award
Books and Brownies Literary Club, President
Peer Tutor
Math League
Hugh O'Brien Youth Leadership Conference
Boys' State; ECSU Leadership Conference



CHARLES MAXIMILIAN "MAX" WALDEN
Hopkins School
Robert E. & Ruth R. Lapidis Scholar
Mary Brewster Thompson Scholar
Cum Laude Society; Student Council
Clare McNamee Latin Award
Cross Country and Track, Captain
All-American in Two-Mile in Track and Field



STEELSON SMITH
West Haven High School
Winthrop A. Smith Scholar
Harvard Book Award; Rensselaer Medal
State Chess Champion
AMBiS (Association of Multicultural and Bilingual Students), Founder
School Newspaper, Editor-in-Chief
Cross Country; Tennis



MIAO "PAUL" ZENG
Wilbur Cross High School
M. Albert Geib Scholar
Violin, Greater New Haven Youth Orchestra
Math League; Yale Physics Olympic Team
Model UN; Tennis; Soccer
International Club, Founder/President
School Newspaper, Managing Editor
Community Service



JEANNE SNOW
Sacred Heart Academy
James S. Davie Scholar
Harvard Book Award
Math League; Photography
School Newspaper, Editor-in-Chief
Drama Club; Musicals
Senior Class Vice President; Key Club
Community Service



2010



MARK ROBERT ARCOBELLO
Salisbury School and Milford, CT
Winthrop A. Smith Scholar
Ezra Stiles College
Yale Hockey
Intended Major: American Studies or
Political Science



JENNIFER LINH BUI
Academy of Our Lady of Mercy
Sidney Lovett Scholar
Davenport College
Master's Aide
Part of Musical (*Something Funny Happened
on the Way to the Forum*)
Journal of Medicine and Law, Layout Team
Major: Undecided



MARIA A. BLACKWOOD
Philips Academy Andover and New Haven
Florence & Sherwood Eberth Scholar
Jonathan Edwards College
Polish Society
Cinema at the Whitney
Yale Belly Dance Society
Intended Major: Economics and History



LEANG CHAING
Central High School, Bridgeport
Davenport College
Vietnamese Students Association
Asian American Cultural Center
Asian American Student Alliance,
Community Outreach Co-Chair
Bulldog Days Organizer
Intended Major: Psychology/Economics



WILLIAM ROBERT BRADLEY
Notre Dame High School
Philip M. & Matthew A. Oravetz Scholar
Berkeley College
Colleges Against Cancer
Yale Medical School Cancer Research in
Immunohistochemistry
Major: Undeclared



BASIE BALES GITLIN
Choate and North Branford
Henry & Janice Brightwell Scholar
Davenport College
Davenport Pops Orchestra, Lead Percussionist
Western Americana Collection, Beinecke
Rare Book Library, Curatorial Assistant
Davenport-Pierson Press, Keeper
Intended Major: History



JAKE RIDLEY KEYES
 Wilbur Cross High School
 A. Bartlett Giamatti Scholar
 Silliman College



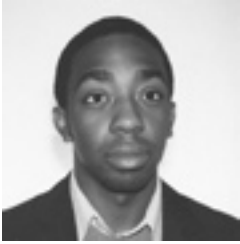
VIVIANA SUZETTE PUCHI
 Hamden High School
 Edward M. Noyes II Scholar
 Ezra Stiles College
 Danceworks
 Ballroom Dance Club
 Despierta Boricua (Puerto Rican Student Group)
 Major: Undeclared



JONATHAN MERTON LASSONDE
 Hamden Hall Country Day School
 Robert & Joyce Mailhouse Scholar
 Branford College



ALYSSA LYNNE REYES
 Academy of Our Lady of Mercy
 M. Albert Geib Scholar
 Jonathan Edwards College
 Jonathan Edwards College Council
 Yale Women's Crew, Coxswain
Yale Herald, Staff Writer
 Major: Undeclared



ADRIAN LATORTUE
 Central High School, Bridgeport
 Silliman College
 Varsity Fencing
 Vietnamese Student Association
 AIESEC International
 ECAASU 2007 Board
 Freestyle Expressions Crew



BRADLEY MORVEN WILLOCKS
 O. H. Platt High School
 White Brothers Scholar
 Berkeley College
 Fencing Team
 Chess Club
 Intended Major: Physics

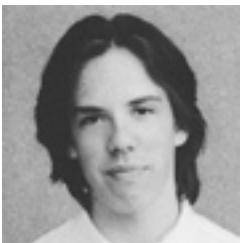


CARA ALICE MORAN
 West Haven High School
 James Davie Scholar
 Berkeley College
 Berkeley College Council
 Berkeley Housing Committee
 Yale Mock Trial Association
 Irish Step Dance
 Intended Major: Political Science

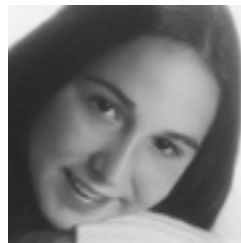


EVA SIMONE WILSON
 Hopkins School
 Robert & Ruth Lapidus Scholar
 Ezra Stiles College
 A Different Drum Dance Company
 Yale Reading Corps, Elementary School Tutor
 Possible Major: Biology

2009



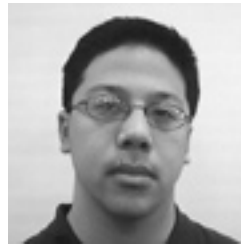
JULES ELLIOTT BOLTON
 Wilbur Cross High School
 A. Bartlett Giamatti Scholar
 Ezra Stiles College
 Club Ultimate Frisbee
 Major: Applied Mathematics



MICAELA GRAMELIS
 West Haven High School
 Carmen L. Cozza Scholar
 Berkeley College
 IM Secretary
 Berkeley College Housing Committee
 Berkeley College Master's Aide
 Club Lacrosse, Captain



ALISHA NICOLE BUTLER
 Hillhouse High School
 Henry & Janice Brightwell Scholar
 Calhoun College
 Yale Political Union, Progressive Party
 Women and Youth Supporting Each Other
 Public School Intern
 Major: Political Science and History



STEVEN LAO
 Fairfield College Preparatory School
 James S. Davie Scholar
 Jonathan Edwards College
 Yale Precision Marching Band Social Chair
 Major: Psychology—Behavioral Neuroscience



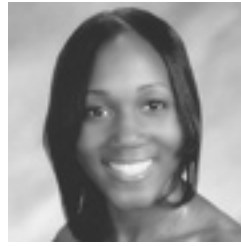
JOANNE M. CYGANOWSKI
 St. Joseph High School
 White Brothers Scholar
 Ezra Stiles College
 IM and Women's Club Volleyball
 Polish Society
 Yale Medical Professions Outreach
 Major: Molecular, Cellular and Developmental Biology



MICHAEL RÉAL LAVIGNE
 Shelton High School
 Winthrop A. Smith Scholar
 Davenport College
 The Yale Spizzwinks(?) A Capella



REGINA MARIE MELENDEZ
Sacred Heart Academy
M. Albert Geib Scholar
Silliman College
Science, Technology and Research Scholars
National Society of Black Engineers
Yale Engineering Design Solar Boat Team
Tutor; Hospice Volunteer
Major: Biomedical Engineering/Pre-Med



JAMILAH S. PRINCE-STEWART
Hopkins School
Robert E. & Ruth R. Lapidis Scholar
Ezra Stiles College
Black Student Alliance at Yale
Rhythmic Blue, Hip Hop Dance Troup
Ethnic Performance Guild
Yale West Indian Student Organization
Intended Major: Ethics, Politics & Economics



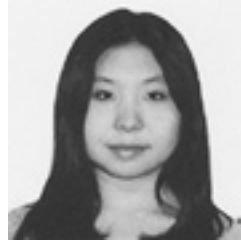
VANESSA MENDOZA
Hopkins School
Sidney Lovett Scholar
Jonathan Edwards College
Yale Engineering Design Solar Boat Team
Yale Gospel Choir
Five Magazine, Art Director/Layout Manager
Major: Architecture



LEAH ANN QUINTILIANO
Bunnell High School
Florence & Sherwood Eberth Scholar
Silliman College
Yale Symphony Orchestra, Flute
Saybrook College Orchestra
Yale International Relations Association and
Yale Model UN
Major: Psychology



MATTHEW A. MOURADIAN
Daniel Hand High School
Edward M. Noyes II Scholar
Morse College
Yale Symphony Orchestra, Violinist
Malibu Ensemble
Berkeley College Orchestra
Major: History



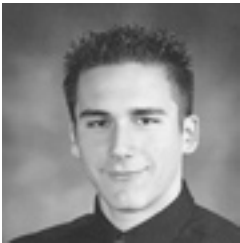
XINYUAN WU
Amity High School
Philip M. & Matthew A. Oravetz Scholar
Jonathan Edwards College
Colleges Against Cancer; Relay for Life
Student Needs Awareness Peer Services
Chinese American Student Assoc.
YNHH Volunteer; Yale Biology Dep. RA
Major: Biology (MCDB)



NICHOLAS R. OLSEN
Career High School
Robert & Joyce Mailhouse Scholar
Berkeley College
Peabody Museum Volunteer; YEEBUG
(Yale Ecology and Evolutionary Biology
Undergraduate Group); Lion Dance Troupe
Summer RA Yale-Myers Forest
Intended Major: E and EB



2008



MARK J. ALBIS
East Haven High School
M. Albert Geib Scholar
Pierson College
Majors: East Asian Studies and
International Studies



DAVID R. DEANGELIS
North Haven High School
Willis Hunt Scholar
Timothy Dwight College
Yale Symphony Orchestra, Vice-President
Yale Precision Marching Band, Drum Major
Yale University Guild of Carillonneurs
Saybrook College Orchestra
Intended Major: Music



JESSICA M. BIALECKI
Wilbur Cross High School
A. Bartlett Giamatti Scholar
Silliman College
Dwight Hall at Yale; Best Buddies; *Yale Herald*
Habitat Bicycle Challenge; FOCUS; Silliman
College TIES; New-Haven-Léon Sister Cities
Project; Phi Beta Kappa
Major: Political Science/Urban Studies



SIMONE C. ELLIS
Warren Harding High School
Winthrop A. Smith Scholar
Morse College
PowerNow, Urban Improvement Corps
Reach Out Jamaica; BSAY
Dixwell Yale Community Learning
Center Mentor
Major: Anthropology



PHILIP J. BURKHARD
Notre Dame High School
James. S. Davie Scholar
Calhoun College
Yale Entrepreneurial Society, Vice President
Associated Student Agencies; *Yale Globalist*,
Publisher; Reach Out, Bulgaria
Club Baseball; Yale Student Ambassador
Major: History



XIEYUE FAN
Cheshire High School
Carmen L. Cozza Scholar
Jonathan Edwards College
Yale Triathlon Team; Yale Cycling Team
Our Education; New Haven Tutors
Physics Research with the Relativistic Heavy
Ion Group
Major: Physics (Intensive) and Philosophy



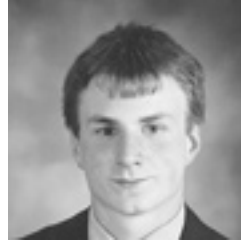
JESSIE E. MacLEOD
 Choate Rosemary Hall
 White Brothers Scholar
 Branford College
 Cross Country and Track
 Yale Hunger and Homelessness Action
 Project; Relay for Life
 Works at Furniture Study of Yale Art Gallery
 Major: History



BRANDON J. TIMMONE
 Hillhouse High School
 Florence & Sherwood Eberth Scholar
 Davenport College
 Teacher Preparation Program
 Major: Philosophy



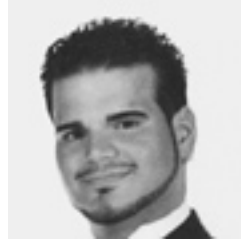
NICOLE POTTER
 Branford High School
 Robert & Joyce Mailhouse Scholar
 Branford College
 Teacher Preparation Program
 Major: Music



DANIEL B. TURNER-EVANS
 Hopkins School
 Robert E. & Ruth R. Lapidis Scholar
 Calhoun College
 FOOT; Team Lux; IM Secretary; HounSibs
 Calhoun College Council; STEP
 MATHCOUNTS; Club Lacrosse
 Major: Applied Physics and
 Electrical Engineering



STEPHEN SCHWINK
 Sheehan High School
 Edward M. Noyes II Scholar
 Calhoun College
 Computing Assistant
Yale Economic Review, Webmaster
 Yale Station.org, Webmaster
 Major: Electrical Engineering
 and Computer Science



ROBERTO VELEZ
 Fairfield College Preparatory School
 Henry & Janice Brightwell Scholar
 Davenport College
 Despierta Boricua; Sigma Alpha Epsilon
 Fraternity; Winner of Yale's Last Comic
 Standing; Mentor at High Meadows
 RA at School of the 21st Century Lab
 Major: Psychology (with a Philosophy track)



RENEE SPENCE
 Hamden High School
 Sidney Lovett Scholar
 Pierson College
 Delta Sigma Theta Sorority, Treasurer
 Yale Black Women's Coalition, Publicist
 Visions of Virtue; Black Educational
 Support Team; Pierson Sibs
 Major: African American Studies/Psychology



KRISTIN WILLIAMS
 Hopkins School
 Robert E. & Ruth R. Lapidis Scholar
 Davenport College
 Delta Sigma Theta Sorority; UIC
 Community Health Educators
 Yale Medical Professions Outreach; Assistant
 at Benhaven; Works at Yale Athletics Dept.
 Major: Psychology



GRADUATE STUDENTS



ANNIE BERMAN (NUR) '08
 Hopkins School
 Washington University in St. Louis '03,
 B.F.A., Photography; Minor, Art History
 TA for Graduate Entry Prespecialty in
 Nursing Class of 2009; RA for "Minding the
 Baby"; Special Interests: Teen-Age Parents
 and Their Children
 Goal: Pediatric Nurse Practitioner



KELLEY DELANEY (NUR) '09
 Hamden High School
 University of New Haven '02, B.S. Criminal
 Justice Investigative Services,
 Summa Cum Laude
 Southern Connecticut State University '06,
 M.A., Psychology
 YSN Student Government; "Stand Down"
 Goal: Women's Health Nurse Practitioner



JONATHAN CABIN (MED) '09
 Hopkins School
 University of Pennsylvania '01,
 B.A., Economics
 Finance Chair, HAVEN Free Clinic
 Goal: Surgeon



KARA DiFRANCESCO (FES) '08
 Branford High School
 University of Virginia '02, B.S. Systems
 Engineering, Minor Economics and
 Environmental Studies
 Yale Teacher Prep Program
 Goal: International work in sustainable
 development and access and availability of
 affordable water supplies



MICHELLE COUTTS (NUR) '09
 Sacred Heart Academy
 Quinnipiac University '05, B.A., Psychology,
 Summa Cum Laude
 Yale Psychiatric Hospital, Milieu Counselor
 Work with autistic adults since 2005
 Goal: Adult Primary Care/Adult Psychiatric/
 Mental Health Nurse Practitioner



EVEROL M. ENNIS, JR. (NUR) '09
 James Hillhouse High School
 Howard University '90, B.S., '96, M.Ed.
 Elder Horizons Program
 DESK Volunteer; HAVEN Free Clinic
 Southern CT Black Nurses Association
 SGO; New Haven Democracy School
 Goal: Adult/Gerontological Nurse
 Practitioner



PETER FABRICANT (MED) '08
 Daniel Hand High School
 University of Rochester '04, B.A., Chemistry,
 Magna Cum Laude with Highest Distinction
 Clinical research in predictors of outcome
 from arthroscopic knee surgery
 Goal: Surgeon



COURTNEY SOUTHARD (MED) '08
 Ansonia High School
 University of Scranton '06, B.S., Biology
 ConnAPA, Yale Student Representative
 Yale PA Student Volunteer
 Griffin Hospital Volunteer; Ansonia Rescue
 Medical Services, Volunteer EMT
 Goal: To work as a Physician Associate in CT



FARRELL D. GODBOUT (NUR) '08
 Sacred Academy; Miss Porter's School
 University of Richmond '03, B.S.,
 Computer Science
 RN, Infant/Toddler Unit, YNH
 DESK, Health Promotion Volunteer
 YSN Student Government
 Goal: Pediatric Nurse Practitioner



ROBERT WIYGUL (LAW) '08
 Hopkins School; Williams College '00, B.A.,
 History and Philosophy, Magna Cum Laude
 University of Cambridge '02, M. Phil.
Yale Journal of Law and Humanities
 Global Constitutionalism Seminar, Assistant
 Work with the President of the European
 Court of Human Rights, Strasbourg, France
 Goal: Law Professor



YOSHIO KANEKO (MED) '09
 Guilford High School
 Harvard University '02, B.A., Neurobiology,
 Magna Cum Laude; Co-President, Class of '09
 Pediatrics Interest Group; Student Interest
 Group in Neurology; Graduate Affiliate and
 Advisor for Trumbull College
 Goal: Practicing clinician in pediatric
 academic medicine



LISA WOZNIAK (GRD) '08
 Hamden High School
 Yale College '00, French & Italian Literature
 Richard J. Franke Interdisciplinary Fellow
 Prince of Liechtenstein Fellow
 Member of Dominican Laity
 Presenter, New England MLA Conference,
 "Savonarola: Michelangelo's Unlikely Muse"
 Goal: University Professor, Writer, Translator



NNEOMA NWACHUKU (EPH) '08
 Hill Regional Career Magnet High School
 Yale University '07, B.S., Molecular,
 Cellular, Developmental Biology
 Select Program Dual-Degree Candidate
 Science, Technology and Research Scholars
 Program, Fellow; World Computer Exchange
 Goal: Physician with emphasis on public health
 research as it relates to health disparities



ELI WHITNEY STUDENTS PROGRAM

Yale's ELI WHITNEY STUDENTS PROGRAM, formerly known as Yale's Degree Special Student Program, is designed for nontraditional students who have not had the opportunity to begin or to complete their formal college education because of previous or continuing family or job responsibilities, but whose work/life experience and community involvements promise to add unusual dimensions to undergraduate life in the classroom. Students attend Yale part-time, are affiliated with but not eligible to live in Residential Colleges, and are not eligible for financial

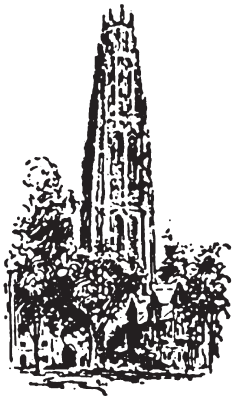
aid. Eli Whitney Program students meet the same academic requirements as other undergraduates. The SUE M. LEVY MEMORIAL PRIZE, derived from a fund created by family, friends, and classmates of Sue M. Levy, BLS '86, an early leader of Yale's Degree Special Student Program, is awarded to an Eli Whitney Student with financial need who has contributed to the quality of life of the Yale community. The Prize is the only source of financial aid available to these students.



DANIEL MASON '08
 Major: History of Art
 Yale University Art Gallery, Student Curator,
 "What is a Line: Drawings from the Collection"
 Nancy Horton Bartels Scholar Intern at the
 YUAG Department of African Art
 Margaret Laughlin Marshall-John M.S. Allison
 Fellowship to attend Venice Biennale
 Goal: Masters Degree in Curatorial Studies



WENDY VALLEAU '09
 Major: Classical Civilization/Teacher Prep
 Yale peer tutor in Latin language
 Tutor in ancient Greek, Southern CT
 Language and Cultural Experience Program
 Mother of six children
 Home school teacher for 19 years
 Goal: As a high school teacher, to make a
 difference in the lives of my students.



THE YALE CLUB OF NEW HAVEN

FOUNDED 1909 INCORPORATED 1969

SPECIAL CONTRIBUTORS 2006 - 2007

Immediate Past President
Bruce W. Sielaff '59 M.ARCH.

President
Severio D. Fodero

Vice-Presidents
Jennifer McTiernan '99
Elaine Piraino-Holevoet '75
Michael A. Schaffer '72

Secretary
Alexis Surovov '02

Assistant Secretary
Barry P. Luke '80

Secretary
Graduate & Professional Schools
William M. Holliday '45W, '50 PH.D.

Assistant Secretary
Graduate & Professional Schools
David L. Reynolds '63, '66 L.L.B.

Treasurer
Timothy Bertaccini '77

Assistant Treasurer
Carl W. Linskog '58

Directors until 2008
Myles Alderman '58
John Caserta '01
Terry M. Holcombe '64, '82 M.A.H.
Tahia Reynaga '98 PH.D., B.A.
Theresa Silla '02
Robert B. Wheeler '56, '61 M.A.T.

Directors until 2009
Elaine Anderson '76 M.P.H.
Emily Barton '03
Christina Coffin '74
Greydon C. Freeman '62 B.E.
Stefanie C. Nicholas '97
Neil Simpson '04

Directors until 2010
Makana Ellis '05
Andrew Horowitz '04
William Jarmuz '05
Thomas McCance '55
William Moore '63, '66 M.ARCH.
Justin Zaremby '03, '06 PH.D.

Honorary Directors
Helen M. Davie

NEW LIFE MEMBERS
Thomas McCance, Jr.
Martha J. Oravetz
Dean S. Sakamoto
Prof. Jack Sandweiss

LIFE MEMBERS
James R. Anderson, Jr.
Mary Arnstein
Prof. Richard Clark Baker
Elizabeth Morse Baptie
Mary Ellen Bass
James Berman
Harold D. Bornstein, Jr. M.D.
Janice Brightwell
Hon. Robert P. Burns
Hon. Ellen B. Burns
Thomas G. Campbell
Louis A. Cappiello
Mr. & Mrs. David G. Carter
Helen C. Cavallaro
Frank C. Chapman
Elizabeth M. Clark
Robert O. Corley
Carmen Cozza
Lycurgus M. Davey, M.D.
Hon. Anthony V. DeMayo
Richard S. Dowdy, Jr. Esq.

John F. Embersits
Frederick W. Farnsworth
Evelyne A. Gahbauer
Gordon T. Geballe
Christopher Getman
Prof. Creighton E. Gilbert
Melanie A. Ginter
Frank M. Grazioso, Esq.
Richard Hegel
Susana Wilder Heinz
Prof. Arvid Herzenberg
George W. Heston*
Terry M. Holcombe
Stuart D. Holland
Prof. Gueh-Djen Edith Hsiung
Gerald M. Kagan
Naomi M. Kantrow
Dr. John D. Kelly
Frank Kenna
Elizabeth B. Kubler
Ruth E. Lapidès
Mrs. Roberta Lawrence
Carleton F. Loucks
Carl W. Linskog
Ken Mackenzie
Robert Mailhouse
John Mc Crillis

Dr. Roslyn Milstein Meyer
Marguerite Nelligan
Dan A. Oren, M.D.
Alan W. Organschi
James R. Owens, Jr.
Vincent Pepe, M.D.
Nicholas V. Perricone, M.D.
Zachary W. Pitluk
Prof. Charles Allan Porter
Helen E. Prouty
John S. Robinson
Lois G. Salamon
Richard B. Schreiber
Phyllis Z. Seton
Bruce W. Sielaff
DeForest W. Smith
Prof. Herman D. J. Spiegel
Shepard B. Stone
Macneil Sturgess
Martin L. Sumner, M.D.
Josephine M. Sutilla
Louis F. Tagliatela, Sr.
George B. Uihlein
Dr. Morton Joel Weyler
Elizabeth C. Yen
Prof. Edward A. Zelinsky
Doris Zelinsky

GIAMATTI CLUB
(\$1000 and Over)
William E. Curran, Jr.
Melanie A. Ginter
Michael D. Griffin
Richard Hegel
Daniel Starr
Barry P. Luke
Dr. Philip M. Oravetz
Phyllis Z. Seton

PRESIDENTS CLUB
(\$500-\$999)
Prof. Richard B. Larson
Prof. Eugene M. Waith
Elizabeth C. Yen

YALE NEW HAVEN CLUB
(\$250-\$499)
John & Dorothy Allen
Timothy Bertaccini
Dr. & Mrs. Harold D.
Bornstein, Jr.
Susan DeSilver
Peter C. Dorsey
Robert Farnsworth Morse
Gerald H. Kahn

John S. Lapidès
John A. Logan, Jr.
Carleton F. Loucks
Christopher M.
Murtaugh, Ph.D.
Lesley Mills
David L. Reynolds
Rev. Arthur B. Robertshaw III
Humbert Vincent Sacco, Jr.
Prof. Jeffrey L. Sammons

ELM CITY CLUB
(\$100-\$249)
George W. Adams III
Mrs. Arnold J. Alderman
Celeste Bagley
Mrs. Myrna F. Baskin
Beatrice Sturgis Bartlett
David L. Belt, Esq.
Nan Birdwhistell
Kim Bottomly
John M. Brown
Rhoda W. Brownstein
Paula G. Burkhard
Edward H. Cantor
David G. Carter
H. Owen Chace
Shulamith S. Chernoff
Robert C. Child III
Prof. Elias Clark
Christina H. Coffin
Joel Cogen, Esq.
Gregory Coleman
Darin C. Cook
Douglas J. Crowley
Radley H. Daly
Janice Davey
Dr. Lycurgus M. Davey
Susan DeSilver
Peter Dorsey
William F. Dow III
Mortimer L. Downey
Robert H. Dunlop III
R. Kemerer Edwards
Lucy R. Elliot
Makana Ellis
Bruce A. Evans
John B. Fisher
Stephen V. Flagg, M.D.
Hon. John C. Flanagan
Severio D. Fodero
Deborah J. Freedman
Greydon C. Freeman
John C. Gabriel
Christopher Getman

Edward C. Goldstone
Martin E. Gordon, M.D.
Philip W. Grande, Jr.
Frank Grazioso
Barbara Greco
Elizabeth M. Greene
Glenn H. Gregg
Mr. & Mrs. Ira Grudberg
George W. Heston*
Nikki J. Holbrook
Dr. William M. Holliday
Philetus H. Holt IV, Esq.
Mrs. Roger W. Hotz
Prof. Roger E. Howe
Douglas J. Ibsen
Karl L. Insogna, M.D.
Herrick Jackson
Elizabeth A. Jonas, M.D.
Gerald H. Kahn
Edward Kamens
Frank Kenna
James K. Killelea, Esq.
Marie L. Landry, M.D.
Robert Leighton
Keith Levine
Michael Lombardo
Richard Massey
Jean Mauro
Thomas McCance, Jr.
Nancy K. Mendel
William F. Moore
Marta E. Moret
Bruce Peabody
Charles A. Pillsbury
Prof. Frederic M. Richards
Lucille B. & Samuel Ritvo
Sheryl A. Ryan, M.D.
Paul M. Russ
Katherine B. Sacks
Prof. Peter Salovey
Jeffrey L. Sammons
Prof. & Mrs. Jack Sandweiss
Robert B. Scullin
Dick Shank
Bruce Sielaff
Charles W. Sizemore
Marjorie Smith
Stephanie S. Spangler, M.D.
Shepard B. Stone
Prof. Robert H. Szczarba
George B. Uihlein
Richard H. Webber, Esq.
Mr. & Mrs. Robert B. Wheeler
John A. Wilkinson
Joe Zuraw

* deceased